

# Autumn 1

# I've Arrived

## Communication & language (prime area)

Baseline assessment

- Talking about stories
- Past, present & future tenses
- Concentration & listening skills

## Personal, social & emotional development (prime area)

Baseline assessment

- Understanding rules and routines
  - Making friends

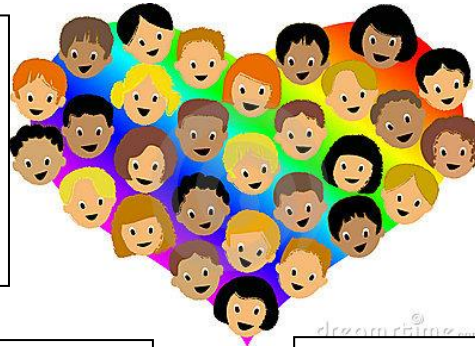
## Expressive arts & design (specific area)

- Drawing pictures of family and friends
- Using media of choice to create collages
- Role play

## Physical development (prime area)

Baseline assessment

- Name writing



## Mathematics (specific area)

Baseline assessment

- Recognising numbers
- Writing numbers
- Naming 2d/ 3d shapes
- Ordering numbers

## Understanding the World (Specific area)

Baseline

- Talking about who lives at our house
- Talking about what makes me special
- Thinking about our class community

## Literacy (specific area)

Baseline assessment

- name writing
- phonic sounds
  - rhyming
  - stories

During the first half term we focus on working closely with the children to find out the exact levels of their learning in order for us to move forward and ensure the children are making good progress from their starting points. The above shows the different areas we are looking at with some of the activities we will use to help us assess.

Any questions please do not hesitate in coming to talk to your child's class teacher.

Miss Hudson.